

# MIRROR

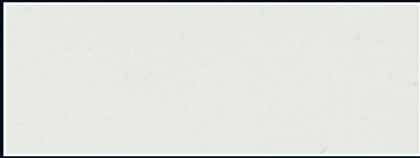
Vachette

Taille : Demi-Peau

épaisseurs disponibles : 0.9/1.1 mm - 1.2/1.4mm

Tannage : Minéral

Aspect : Effet Miroir



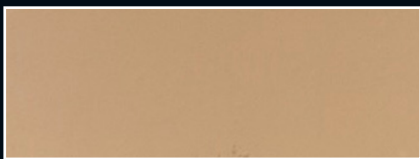
BIANCO



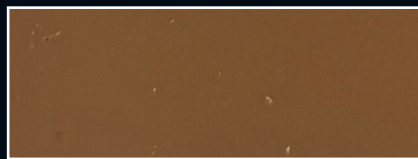
CREMA



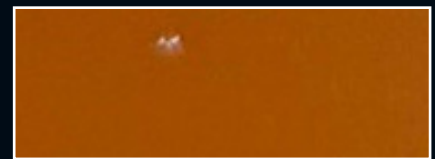
SABLE



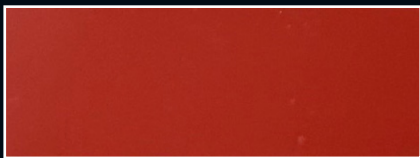
NUDE



TAUPE



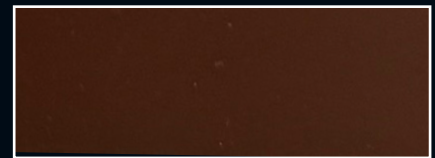
NUT



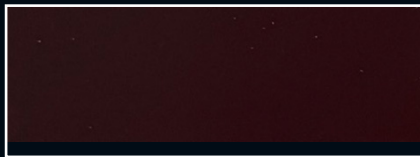
TERRACOTTA



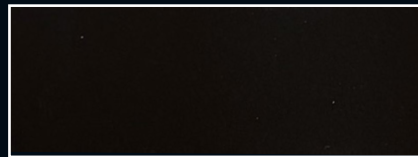
ROSSO



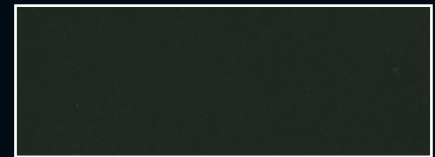
CIOCCOLATO



BORDEAUX



TDM



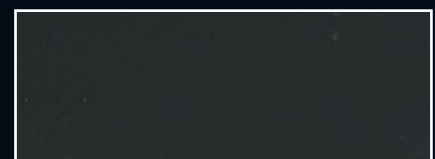
FOREST



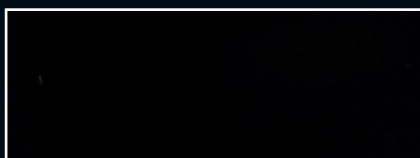
PETROLIO



DEEP BLUE



GRIGIO

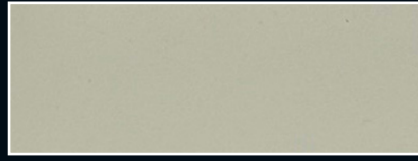


NERO

## NOUVELLES COULEURS :



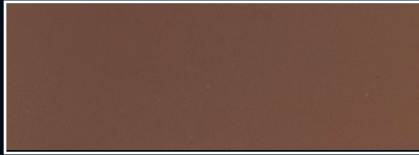
LATTE



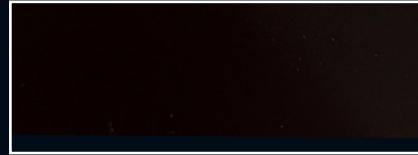
MINERALE



PINK



MUSE



DARK BROWN



YELLOW



ARANCIO



ELECTRIC BLUE



NIGHT BLUE



VERDONE